

## Fire Threatens Idlewild

On Saturday, October 20, a serious forest fire broke out on the Mutz Ranch, near the fence intersection of the Taos Pueblo, the Mutz Ranch, and the northwest corner of Idlewild. Apparently, hikers trespassed onto the ranch and up to the base of the rocks that form Bear Point, built a fire, and tended it until they believed it to be extinguished. Investigators feel that it was probably young people because they left candy bar wrappers and soda containers behind. Thanks to the tireless work of area fire department personnel and volunteer firefighters, and the cooperation of a southerly wind, the fire was contained by Sunday afternoon. According to Frank Dodge, who walked the site a few days later, the fire burned between three and four acres and came within 200 yards of the Idlewild fence! See the expanded article on p. 11.

# Idle Times

Wayne Tarter

## LETTER FROM THE PRESIDENT

Greetings Idlewilders,

Once again we experienced a wonderful summer season, thanks to the bountiful rains. The Moreno Valley and Idlewild have never looked better, although the abundant rainfall did play havoc with our roads.

It is once again time for each of us to consider our obligation to the Idlewild community by paying our yearly dues of \$150.00. Last year we had increased participation and hopefully that trend will continue. Those members who do not feel the need to participate should contact a board member and explain your concerns. We will then attempt to address those concerns. We are all members of this wonderful community and should all work together for the betterment of the community. We will again offer our "goodies package" to those who meet their obligation by January 1, 2008. These contributors will be acknowledged in the spring edition of the *Idle Times*.

I was directed at the summer community meeting to publish the caretaker's and property owners' responsibilities.

*The caretaker . . .*

1. will live in the caretaker's cabin as the primary residence;
2. will maintain the cabin in

a workable, clean, and attractive condition that conforms with the ideals of Idlewild;

3. will own a vehicle adaptable to all seasons and terrain at the caretaker's expense; will carry all insurance required by law;

4. will be responsible for security: will travel all numbered roads on an irregular, three-times-per-week basis, and from the roads visually check the properties, reporting any suspicious situations to local police authorities;

5. will keep and maintain all Idlewild Community properties in proper condition to operate. All maintenance on Idlewild properties will be performed by licensed personnel;

6. will work with all committees of the community;

7. will keep records of expenses and promptly contact the Treasurer to pay all statements;

8. will perform such other tasks from time to time as are assigned to him by the president or by members of the executive committee;

9. will receive a salary as set annually by the Board of Directors;

10. will be primarily employed by IWCC, and all duties of IWCC will be performed

prior to any work performed for individual property owners.

*Property owners' responsibilities:*

1. A reasonable rate of pay is expected for private employment of the caretaker.

2. The IWCC will not be responsible for any work done for private owners.

3. Private owners must realize that the caretaker's duties to IWCC are top priority.

4. Charges for use of the worship center will be paid by individuals, at an agreed price, to both the IWCC and the caretaker.

5. Annual fees paid to the caretaker for opening, closing, etc., shall be negotiable by the parties involved.

6. It is suggested, but not mandatory, that cabin owners pay a small stipend at their discretion to the caretaker.

These responsibilities were published at the time of Caretaker Dodge's employment. We all should be grateful for the good work that Mr. Dodge does for the community.

Speaking of which, the Caretaker Cabin Fund is in good shape, thanks to many generous donations and the sale of some IWCC property. The

### Board of Directors

#### President

Ron Wells

#### Vice-President

Frank Ray

#### Treasurer

Earl O'Steen

#### Secretary

Frank Ray

#### Board Members

Sue Dorr

Max Helen Harrison

Jim Herman

Chris Herring

Ann Knapp

Jerry Middleton

Earl O'Steen

Frank Ray

Don Reavis

Jerry Thomason

Ron Wells

Don Woolsey

#### Chairpersons

##### Beautification:

Mary Lib Thornhill

##### Directory:

Max Helen Harrison

##### Facilities:

Jerry Middleton

##### Forest Health & Safety:

Frank Ray

##### Maps:

Frank Ray

##### Property:

Don Reavis

##### Roads:

Jim Herman

##### Ways & Means:

Jerry Middleton

##### Worship:

Donna Porter

##### Newsletter:

Helen Hyams Ray

##### Historian:

Ann Knapp

See p. 11 for a complete list of committees.

(President's Letter, cont'd.)

deal for the sale of Blocks 17 and 18 is about to close, and IWCC will receive \$90,000, less taxes, for this land sale. The Ways and Means Committee appointed last summer to investigate various options and associated costs is about to submit their report to the board. See a brief article by them on p. 3. It appears that their recommendation will come in well under the available funds. We will hopefully have a new caretaker's cabin in place by next summer.

Frank Ray, myself, and various members of the community, including A. J. Beretta and Frank Dodge, have been meeting with our neighbors. We had an informative meeting with Taos Pueblo War Chief Louis Archuleta; Mr. David Mutz, owner of the Mutz Ranch to our north and manager of the Gallagher Ranch; and Mayor Billie Odum of Eagle Nest. During these meetings we discussed many concerns common to both parties. Chief among these were fire prevention, emergency

evacuation procedures, forest health, and trespassing issues. Both Mr. Mutz and the Taos Pueblo are extremely concerned about trespassers on their property, and we assured them that we would make our community aware of this issue. These matters will be addressed on p. 6 of this publication. Also, please take time to read the article in this issue on the formation of an OHV User Group.

Thanks to all of our committees for their wonderful and tireless work—all for the benefit

of everyone in our community. Special kudos to Jerry Middleton and the Ways and Means Committee for their work on replacing the caretaker's cabin. Because of their good work, generous donations, and property sales, we will soon have a new facility for our caretaker.

Have a safe and prosperous fall, winter, and spring. We look forward to seeing all of you next summer.

*Ron Wells*  
Idlewild President

### Area Code Change!

Please read this important information. New Mexico has changed the telephone area codes for most of New Mexico. Parts of the northeast quadrant, including Albuquerque and Santa Fe, will keep their 505 area code, but most of the state has been changed to 575. The new area code became active on **October 7**; at this time callers can use either the 505 or 575 area codes to call locations that have been assigned the new area code. However, starting on **October 5, 2008**, 505 calls made to locations that have been assigned to 575 will get a recorded message advising the caller to hang up and redial using 575.

After **January 11, 2009**, callers who use the incorrect code will receive a recorded message saying, "Your call cannot be completed as dialed," or, if their old number has been reassigned, they may be connected to the wrong party.

Please inform your friends and business associates of the change, as well as correcting any speed-dial functions on your phones. The Spring 2008 Idlewild Directory will reflect the new area codes. Several web sites have further information on this topic. One you might try is <http://www.qwest.com/announcements/NewMexicoAreaCodeSplit/>.

### Contents

Fire Threatens Idlewild	1
President's Letter	1
Area Code Change	2
IW Community Church	2
In Memoriam	2
Ways and Means Report	3
OHV User Group	3
Idle Chat	3
Fund-Raising Committee	3
Chapel and Community Center Scheduling	3
Where Do My Dues Go?	4
IW Archives	4
Web Site Re-Construction	4
Annual Meeting Minutes	5-6
Our Neighbors	6
Treasurer's Report	7
Forest Fire on Mutz Ranch	8
Forest Health and Safety	8-10
Slash Pickup Program	9
2008 Idlewild Map	10
2008 Idlewild Directory	10
Contact Information	11
Our Volunteers	11
Donation Form/ Memorial Plaque Form/ Directory Change Form	12

### Idlewild Community Church

*Donna Porter, Worship Committee Chair*

It is a joy to serve our community by scheduling the ministers for each summer season. Many ministers are now saying, "It's been two years since we've been there. Will you invite us back?" That is a compliment to you for your support—by attending our church services; by the generosity of your gifts; by serving as worship leaders, organist, choir members, and ushers; by setting up chairs, planning our potluck lunches, and performing many other special services.

Thanks to your gifts and the hard work of Fred and Louise Montague, Bob and Joan Kaye, Walt and Beverly Davis, A. J. and Barbie Beretta, Ron and Dot Wells, Richard Barbour Construction, and Frank Dodge, among others, we have made some great improvements to the minister cabin this fall.

If you have names of ministers to suggest for summer 2008, please mail the names, phone numbers, and current church location to Donna Porter, 812 W. 59th Terr., Kansas City, MO 64113, or e-mail this information to [djint@sbcglobal.net](mailto:djint@sbcglobal.net). If you have ideas and want to help with the preacher cabin physical plant, please contact Sue Dorr, chair of the newly formed Preacher Cabin Care Committee, at [suebear11@hotmail.com](mailto:suebear11@hotmail.com).

Thanks for taking part in supporting our Idlewild church community.

### In Memoriam

Hazel Bruckner  
Caren Clark  
Bertha Eckles  
Don Hart  
Vicki Hull  
Margaret Putnam  
Jay Runner  
Betty Stanford  
Jerry Wetman  
Paula Weidenmaier  
Wanda Woolsey

*We honor here present and former residents of our community. If you know of other deaths in our community of which we are not aware, please notify Frank Dodge or a member of the Idlewild board.*



## **Ways and Means Committee Report**

Greetings from your Idlewild Ways and Means Committee. We have worked diligently throughout the summer on the project to furnish a new caretaker's home. Through the sale of Idlewild Community property, we will have the necessary funds to purchase a lovely modular home for our caretaker. Construction of a footing and stem wall should begin in the late spring of 2008.

Several homes have been considered, based on quality of construction, size, and how the home will contribute to the aesthetic beauty of the mountain. Plans for this project will be continuing throughout the fall and winter months, as the board selects a specific design from the top bidders.

In closing: on behalf of the Idlewild Community, Board of Directors, and Ways and Means Committee, we extend many thanks to Richard Barbour, who has been unstinting with his expert opinions and advice. Thanks also go to the numerous community members who helped in the search for a superior dwelling, as well as to all those who assisted financially in this worthy endeavor. We will keep you all up to speed on our progress.

## **ATV'ers and Snowmobilers Unite!**

The Idlewild (and surrounding communities) Off-Highway Vehicle User Group is now forming. All interested persons are encouraged to respond to this notice. Please do not feel you must own an OHV to participate.

New Mexico regulations describe Off-Highway Vehicles (OHVs) to include ATVs, UTVs, snowmobiles, dirt bikes, and any other motorized vehicles not designed by their manufacturer for routine operation on established roadways (paraphrased). A pamphlet listing the regulations for riding OHVs in New Mexico is included with this newsletter.

Initially, the OHV User Group will emphasize the safe, respectful operation of OHVs within Idlewild; understanding the New Mexico regulations pertaining to OHVs; sharing information and experiences we've had while riding in northern New Mexico, especially in the Enchanted Circle region; and identifying ways that OHVs can benefit and serve our community.

Since the idea of an OHV User Group was first suggested, many residents of the associated communities, OHV owners and non-owners alike, have expressed quite a number of excellent ideas. Let's put our combined energy and passion into forming this group. We need to know who, and where, you are. Please contact Jim Herman, 575-762-4579 (days), 575-762-2674 (evenings), [jh1008@gmail.com](mailto:jh1008@gmail.com); or Mark Jefferson, 806-358-3941 (evenings), [jeffsn@suddenlink.net](mailto:jeffsn@suddenlink.net).

## **Idle Chat**

We send our sincere condolences to the families of beloved friends we have lost this year. "In Memoriam," on p. 2, lists the names of those we are aware of, including several of our neighbors who passed away since the "bell-ringing" this summer. Memorial donation and memorial plaque forms are included on the last page of the newsletter. In addition, we wish good health and joyous times to those among us who are valiantly fighting serious illness or disease.

The size of our membership and the part-time nature of our occupancy means that we no longer know everyone by sight. It is our goal to see old and new members become involved and work together on projects. We especially welcome the new generations of Idlewilders whose energy is being converted into participation. As part-time residents of this beautiful place, we should all make a special effort to get to know newcomers. Read the list of committees on p. 11 and consider the satisfaction and enjoyment you'll get from adding your ideas to those of people who are already serving their neighbors.

The IWCC Board of Directors voted this summer to extend "active membership" in the IWCC to all dues-paying residents in the communities neighboring the original J. W. Dickerson Grant (Idlewild)—Donel Heights, Maxwell, Klondyke, Gallagher Addition, and other free plats—providing them with full voting privileges in community affairs and allowing them to serve on the Board of Directors. All members of these families are strongly encouraged to participate in every aspect of community life.

Thank you for paying your trash fees. Though most of us are not full-time inhabitants of the area, we know that without the convenience of the trash service, it would be much more difficult to keep Idlewild beautiful, as well as more tedious and time-consuming for us to deal with it ourselves.

We thank Frank Dodge for the extraordinary work we regularly see him do for the community. Two recent examples were his assistance in fighting the fire on the Mutz Ranch and his and A. J. Beretta's efforts helping Qwest to bury phone lines on Idlewild roads to make them more passable by fire trucks. And he is definitely the "go-to guy" for family and property information any time we need it for the map, Directory, or newsletter. Thanks, Frank!

## **Chapel and Community Center Scheduling Committee, Sue Dorr, Chair**

All events using the chapel and Community Center should be scheduled with Sue Dorr or the caretaker. There will be **no fee** for members of the community and their families for use of the chapel and Community Center; however, donations are appreciated.

If you need help setting up and cleaning up, work out fee arrangements with the caretaker. Tables and chairs are available free of charge for use to community members. NO sound equipment is available.

**Nonmembers** of the community should also schedule events, with payment due on the day of the event. There will be a \$50 charge for use of the chapel only, a \$50 charge for use of the Community Center only, and a \$75 charge for use of both facilities. Arrangements and fee for setup and cleanup must be worked out with the caretaker.

**No alcoholic beverages** are allowed on either premise.

## **Where Do My Dues Go?**

Several people have asked about the benefits they receive from paying dues to the IWCC. If they don't live on Idlewild roads, if they pay the caretaker for work he does for them or pay an extra stipend to him at Christmas, if they make an offering at Sunday services, they believe that it isn't necessary for them to also pay dues to the IWCC.

We all donate our time and energy and make financial contributions to keep Idlewild rolling along, but the overhead of a community like ours is deceptively large. Some, though certainly not all, of the items paid for by dues are:

- Basic overhead: property and income taxes, insurance, utilities, upkeep and repairs on community properties, licenses, supplies, and accounting fees. The chapel was repaired this summer; the preacher cabin needs repair; and new cabinets are being built in the Community Center to improve storage and use of the space. Supplies for community events also come from dues.
- Contributions to the Eagle Nest Fire Department and EMS, who are our first responders in times of crisis.
- Two newsletters a year to all residents; a Directory and 2-map set of Idlewild and Surrounding Communities, free to dues-payers; plus 911 phone stickers, car identification stickers, and a cabin rules list to post.
- Repairs of roads. Priorities are being set for repair of the Idlewild roads, which will take large amounts of money. In addition, Frank Dodge checks and works on roads in all the communities. We have seen him clearing culverts in the rain after a storm on the Gallagher Ranch portion of Highway 127, not for any particular property owner, but to keep the road clear for everyone who lives farther up the highway.
- The caretaker's salary, which supports 24-hour "boots on the ground," including the all-important security he provides.
- Extraordinary expenses, such as the long-needed new cabin for the caretaker; the felling a few years ago of 16 dead ponderosa pines near the worship center; and the addition of a new keyboard and sound system for the worship center. We never know when new unexpected expenses will arise.
- As a dues-paying member, you have a say in where the dues go, by being a voting member of the community.

The IWCC has been a stable organization serving our area for 50 years. Supporting this group provides us with an organizational center whose directors represent us all. Without the support that makes the IWCC possible, it would be virtually impossible to get anything done for the community. When you pay your dues, you're saying that the community matters to you, that you believe your contribution matters, and that it's worthwhile to make an effort to improve and maintain our second home.

### **Archive Information Being Gathered, Helen Hyams Ray**

The Board of Directors has received many requests for information about when (or if) a ruling or guideline was passed, who was on the board in a given year, what was included in newsletters in the past, and many other such questions. In an effort to avoid losing the "official" historical documents of the IWCC and to preserve them for viewing in the future, we are collecting all of the documents you are willing to loan to us, scanning them, making paper and computer copies, and arranging for one copy to be stored in a fireproof file cabinet in the Community Center and one to be stored away from Idlewild for protection against possible fire. Original copies will be returned to you; non-public documents, such as the minutes of board meetings, will not be openly available to the public, though they will be archived.

Many of these documents are still in cabins, or were taken home by residents. They make fascinating reading and are too valuable to the community to just be discarded. At the moment we have a few bylaw revisions, board and annual meeting minutes, original deeds, treasurers' reports, Directories, road upkeep information, etc.

Please let me know if you have any papers to contribute. I can e-mail you a listing of what I have at this point or send a copy to you by mail. If you can send me materials over the winter, at 8703 Granada Hills Dr., Austin, TX 78737, 512-301-8667; hhyams@swbell.net., that would be wonderful. If not, I'd be happy to receive it in Idlewild during the summer.

### **Idlewild Web Site Re-Construction, Frank Ray**

During the July Board of Directors' meeting, we had discussions concerning our IWCC web site experiment. Initially, the site was based on a user forum structure, but there was little use of this medium over a period of two years, and the site seemed to stagnate after the initial setup period. We were reminded of this by our caretaker, who pointed out the need for more active control by the community of information on the site. Craig Sutton, whose family has produced its own private web site and several others for neighborhood use, and the other Sutton family "webslingers" have graciously agreed to help us in remodeling and improving our Idlewild site, so we have labeled it "under construction" for the time being. Although we do not have a private electronic bulletin board set up at this time, the Suttons have already posted some beautiful photographs of the area, taken mainly by Philip Sutton, on the public part (no registration necessary), as well as articles about Eagle Nest, the mine, and much more. It's a great beginning.

We are also in the process of revising the Web Site Committee, which will act as a collection point for community input, ideas, suggestions, and criticism. The web site is only as effective as the information it receives. Please contact me at frankray@swbell.net if you would like to participate in this committee and help our webmasters to make the site even more informative.

The contact people for the site are Craig Sutton (casutton@aol.com) and Philip Sutton (psutton@suttonco.com); they say that while the site is under construction they may only be able to add links to interesting sites and to respect those who wish to opt out of being on the list. We thank them and the others in their family who are making this wonderful communication tool possible.

The link to the website is still <http://www.idlewildcommunity.org/html>. Log on now!



**Idlewild Community Annual Meeting  
July 29, 2007**

President Ron Wells called the meeting to order.

The Board of Directors present were introduced.

Copies of the minutes were distributed. Lisa Henthorn moved that the minutes be approved as published. Skip Johnson seconded. Motion passed.

Earl O'Steen presented the Treasurer's Report. [See p. 7 of this newsletter.] Lynn Hatfield moved to accept the report. Mark Jefferson seconded. Motion passed.

Carlton McNair presented the community with a framed map compiled by Vince and Virginia Brown many years ago. It is to be hung in a prominent place in the Community Center.

**Committee Reports**

*Directory Report:* Helen Hyams Ray reported that after quite a bit of detective work by Max Helen Harrison, Frank Ray, and herself, correct information for the Directory was greatly improved.

*Map Committee Report:* Frank Ray reported that Jan Houser had put together the first "new" map. Frank has put the map on computer, adding that all changes for the 2008 edition should be given to him by May 1, 2008. He has distributed maps to the Eagle Nest Volunteer Fire Department, the EMTs, the Taos Pueblo, and others who might have a need for them. Paul Fahrenthold was thanked for making larger maps available. Paul has requested that revenue from the large maps be dedicated to the Caretaker Cabin Fund.

*Road Committee Report:* Road Committee Chair Jim Herman presented the report.

1. Dust control was discussed. The original plan was to apply magnesium chloride to State Highway 127. As the state plans to blade the road once a month, the application of magnesium chloride would be useless. The board was requested to attempt a compromise with the New Mexico State Highway Department.

2. Road conditions were discussed. The weather changed from snow to rain and Johnny Johnson was counseled not to attempt any roadwork. However, with the present condition of the roads, the board instructed Jim Herman to arrange for road repair to start immediately.

3. Several questions arose concerning Road 3, Road 12, and the bottom of Road 6.

4. Lisa Henthorn proposed that donations for road repair be solicited at the annual July 4th holiday picnic.

5. Jim Herman will survey which roads will have priority work done, depending on need, impact, and the number of people using a road.

6. Walter Davis was thanked for the ditch that will help with drainage. Walter also has a tanker truck to deliver the magnesium chloride. He is donating the magnesium chloride to the community. Tiny Kite would do the spraying, but a grader is needed. The magnesium chloride will last about four months.

*Property Committee Report:* Requests by John D. Cullers and Jan Clay to buy lots were approved. Paul Hamilton's request was denied.

*Beautification Committee Report:* Mary Lib Thornhill, Chair, reported that trees need to be planted along State Highway 127. She thanked the Berettas for their efforts in keeping State Highway 127 free of litter.

*Ways and Means Committee:* This committee includes Jerry Middleton, Don Woolsey, Richard Barbour, Don Reavis, Chris Herring, Joan Kaye, and Walter Davis. They are charged with assembling a final cost for a new caretaker's cabin. The report is to be received within 90 days. They are also asked to look for a lot to put a fence around for Frank Dodge to use for storage.

Ron Wells told the community that members of adjacent neighborhoods are eligible to be on the Board of Directors.

*Newsletter Report:* Helen Hyams Ray said that only two newsletters out of 376 were returned this year with incorrect addresses.

*Forest Health and Safety Committee Report:* Frank Ray said the committee was formed in order for the community to do the correct things regarding the forest. A. J. Beretta is now serving on the committee as he is a full-time resident and has access to new, local committees. According to the Cimarron Watershed Alliance, Idlewild needs to clean up the area to help diminish the fire danger. Lisa Henthorn suggested sending letters to members of the community requesting the clearing of dead wood. Additionally, the roads need to be evaluated for fire and ambulance accessibility.

*Facilities Committee Report:* Jerry Middleton reported that the guest minister cabin needs repairs on the west side. The cost would be about \$1,000. Jerry Thomason was thanked for repairing the concrete buttresses on the chapel. There needs to be grading done around the chapel to prevent water from draining into the closets. The Community Center is in good repair and new cabinets will be installed. The large "unsightly" outdoor table will be removed. Dot Wells requested handicap rails for the restroom in the Community Center.

*Rental Property Committee Report:* Chair Sue Dorr presented the report. All events using the chapel and Community Center should be scheduled with Sue Dorr or the caretaker. There will be no fee for members of the community and their families for use of the chapel and Community Center; however, donations would be appreciated. If help is needed in setting up and cleaning up, a fee should be worked out with the caretaker. Tables and chairs are available free of charge for use to community members. No sound equipment is available. Nonmembers should also schedule with Sue Dorr or the caretaker, with payment due on the day of

the event. There will be a \$50 charge for use of the chapel only, a \$50 charge for use of the Community Center only, and a \$75 charge for the use of both facilities. Arrangements and fee for setup and cleanup must be worked out with the caretaker. No alcoholic beverages are allowed on either property. Skip Johnson moved to accept the report. Jerry Middleton seconded. Motion passed.

#### Unfinished Business

It was suggested that it was time to install attractive road signs.

The stickers for cabins and cars were discussed.

Cabin Rule 8 concerning the use of ATVs in the community was discussed.

#### New Business

President Ron Wells thanked those who were attending the Annual Meeting.

The Nominating Committee consists of Joan Kaye, Chair; Mary Lib Thornhill; and John Dorr. Those nominated are Chris Herring, Jerry Thomason, Ron Wells, and Don Woolsey. There being no nominations from the floor, Lynn Hatfield moved that the slate be elected by acclamation. Elaine Randall seconded. Motion passed.

Lynda Sudduth requested that the Board of Directors consider allowing blood relatives of cabin owners to be eligible to serve on the board.

Lisa Henthorn suggested that a Fund-Raising Committee be formed. She was put in charge of the committee.

Frank Ray suggested a committee to research further the use of ATVs in the community.

There being no further business, Joan Kaye moved and Lisa Henthorn seconded that the meeting be adjourned. The vote was pro.

The next Annual Meeting will be held on **July 27, 2008**.

Respectfully submitted,

Ann Knupp, Interim Secretary

.....

### **Talking with Our Neighbors, Frank Ray**

As vice president of IWCC and chair of the Forest Health and Safety Committee, I have been fostering regular and more frequent communication with our neighbors. Five years ago, Helen and I visited with the Fire Marshal of the Taos Pueblo. He received us very cordially and gave us a comprehensive overview of the fire danger in our area. At that time, he suggested that a more appropriate representative for meetings would be the Taos War Chief. In addition, that year I spoke briefly with David Mutz of the Mutz Ranch, who also had some thoughts about fire safety.

At the Board of Directors meeting in July, I announced a plan to have an official chat with all of our neighbors to discuss issues of common interest, and we set a goal to see the current Taos War Chief, Louis Archuleta; David Mutz of Mutz Ranch; Ngaire McNaghten, manager of Gallagher Ranch; and Billie Odum, the new mayor of Eagle Nest.

Representatives at these meetings were Ron Wells, Frank Ray, A. J. Beretta, and Frank Dodge. Ngaire McNaghten and I met via a long telephone conference, and I believe her concerns will be well reported here.

From the IWCC perspective, recent suggestions made in the Forest Health and Safety Committee by our new member A. J. Beretta have brought into focus the issue of public evacuation in the instance of a major wildfire. Since we cannot do this effectively without the cooperation of our neighbors, we brought this topic up in each meeting. All of our neighbors are sensitive to the issue of saving lives in such a catastrophe and are willing to work on plans for alternate rapid exits from our community. We came away from these meetings with a more than satisfactory feeling about IWCC's relationships with them.

#### **The Problem of Trespassing**

All of our neighbors have concerns that can be highlighted by one word: **TRESPASSING!** All of our abutting neighbors have witnessed actual vehicular and pedestrian trespassers on the Mutz and Gallagher ranches and on Taos Pueblo land. In addition, Dave Mutz reports many instances of fire rings being left at Bear Point. This should *not* be happening in our community. The liability issues, not to mention fire danger, are too many to list here, but *our neighbors should not have to worry* about Idlewild citizens or their children trespassing on their property.

YOU SHOULD NOT CROSS BOUNDARIES into private ranch or Pueblo land. Not on foot, on or in a vehicle, or on horseback. Most of us know not to trespass on our neighbor's property when we're back in our winter abode, and this is the same thing. Just because a ranch is large and open does not make it public. The rules of privacy and trespassing should be the same as if you were home.

We are fortunate to have gentle, responsible, and caring neighbors. I think Ron, A. J., and Frank Dodge all experienced this during our meetings. Let's nurture and strengthen this relationship rather than contaminating it with instances of trespassing.

# IDLEWILD TREASURER REPORT

August 1, 2006 to July22, 2007

	Deposits (Bank Interest)	Contract Services	Utilities	Repairs Maint	License & Fees	Supplies	Road Expense	Taxes	Insurance
August	\$2,477.09	\$1,225.00	\$512.40	\$529.47	\$600.00	\$464.43	\$5,749.89		
September	\$865.94	\$725.00	\$325.46	\$1,042.95	\$31.86				
October	\$1.91	\$725.00	\$53.58	\$612.69					
November	\$1.23	\$725.00	\$490.39		\$38.00	\$369.40			
December	\$20,946.25	\$725.00	\$722.31	\$1,681.89	\$11.70			\$808.44	
January	\$1.42	\$725.00	\$145.40			\$276.70			
February	\$4,536.33	\$725.00	\$616.14						
March	\$701.48	\$725.00	\$1,179.57		\$115.36			\$65.24	\$831.00
April	\$1.36	\$725.00	\$455.41						
May	\$751.37	\$725.00	\$108.12		\$155.00	\$212.44			
June	\$1.25	\$725.00	\$419.26		\$10.00	\$1,656.22		\$316.00	
July		\$725.00						\$780.00	
Total									

Checking Account:			CD's			
Balance 06/30/2004	\$32,064.25		Renewed		Matures	Value
Balance 07/27/2005	\$24,736.30		10/29/2006		10/29/2007	\$15,623.57
Balance 07/27/2006	\$26,390.16		11/10/2006		11/10/2007	\$12,311.77
Balance 07/22/2007	\$29,353.14				TOTAL	\$27,935.34
Fund Balance 7/22/2007						
General	\$15,269.72					
Road	\$10,988.13					
Church	\$3,095.29					
Building Fund	\$44,799.64					
CD's	\$27,935.34					
TOTAL FUNDS	\$102,088.12					



## Living in the Forest

### Forest Fire on Mutz Ranch

The fire that broke out on October 20 originated on, and stayed confined to, Mutz Ranch. Dave Mutz later said that there were several spots in that general area where people have arranged rocks into fire rings, and he felt that campfires were a common activity. As reported in the *Sangre de Cristo Chronicle*, Eagle Nest wildland coordinator Mike Lund suspects that the fire was started by a campfire built on Friday night, October 19, and 20-mile-per-hour winds out of the south and southwest on Saturday morning kicked up the embers and ignited the ranch fire. Pushed by the southwest wind, it burned along the base of the rock bluff, traveling east and northeast. It also took several paths up the bluff and burned in a variety of locations on top of Bear Point. It was fortunate that the wind was blowing away from our community; otherwise, it surely would have sustained serious damage.

Coordinator Mike Lund said, "The fire had a lot of potential to spread very far. Saturday, it jumped containment lines several times." However, the fire was contained due to the advanced skill level of the firefighters on scene. Rio Fernando, Eagle Nest, Moreno Valley, Angel Fire, Taos Pueblo, and Red River Fire Protection agencies responded to the scene. The coordinator credits the heavy response to the area firefighters who participate in the Enchanted Circle Regional Fire Protection Association, a group of fire departments that sponsor wildland training.

In particular, Idlewild owes a great deal to the help of our close neighbors, the Eagle Nest Volunteer Fire Department and the Taos Pueblo: in addition to supplying fire crews, the Taos Pueblo was very prompt in opening their gate at the end of Road 14 for additional access by the Eagle Nest Fire Department to the fire area. This is a fine example of just how upstanding our neighbors are. Next time you have a chance, give them some support. Our community members also deserve a great deal of credit for stepping up to help in many ways.

*Report from Jim Herman:* For the most part, there were two crews on the scene. One was working at the base of the rocky bluffs that form Bear Point; the other was on top. The crew down below had food and water, but no access or direct contact with the crew on top. They remained on the scene all night Saturday to extinguish hotspots, and to be present for an expected overnight wind shift coming out of the northwest and north. The wind shift did not occur until around 10:00 a.m. Sunday morning, and by 1:00 p.m. Sunday it was snowing.

There was no way to share supplies between the two crews. Through the day on Saturday and well into the night, Mark and Sandy Jefferson made numerous trips on their OHV shuttling supplies and equipment between the crews. Many, many thanks to them for that! They were able to locate and transport necessary equipment (chainsaws, shovels, etc.), mark routes for the emergency vehicles to follow, and perform many other tasks that allowed the firefighters to concentrate on the fire. The fire crews used our yard as a staging area because the gate to the ranch is there, and they had asked to use the cabin as a makeshift office and a place of respite for exhausted firefighters—which never really happened. Several Idlewilders took food and water to the fire crew working on the top side of Bear Point. The Angel Fire Support Group also brought food and water to the scene of the estimated 26 firefighters.

And let us not forget Frank Dodge, who worked ceaselessly alongside the crew members.

It would be very difficult for me to overstate Idlewild's good fortune with the winds. If the wind had begun to blow strongly out of any northerly quadrant, it would have been disastrous for our community. The fire consumed an estimated 3.5 acres of ranch land. Alarming, by my estimation, it originated not more than 100 yards from the nearest parts of Klondyke and Idlewild. A disaster narrowly averted.

*A postscript from A. J. Beretta:* I believe the fire consumed mostly needles on the ground, dormant grasses, and dead, fallen trees. I don't think the fire ever crowned from what I could see. **This event should help to encourage our residents to remove dead trees and other combustibles from their properties.**

### Forest Health and Safety Committee, Frank Ray, Chair

A. J. Beretta agreed to join the Forest Health and Safety Committee and has contributed a set of starting points for renewed activity. In mid-summer, he and I learned a great deal at a Fire Safety symposium in Angel Fire. We found two groups that we think are potentially good allies of the IWCC, the **Cimarron Watershed Alliance (CWA)** and the **Colfax County Coalition of Firewise Communities (CCCFC)**. A majority of members of the CWA are crop and livestock producers. Their understanding of forest and rangeland health is immense and is properly focused on the Cimarron Watershed. Using this definition, they are a powerful ally when it comes to tending the overall forest. Angel Fire and Taos Pines Ranch have already benefited greatly from grants supported by the CWA. Eventually, we also may be able to receive funding to aid in improvements to our local forest. There is much to learn about the process.

#### *Being a "Firewise" Community*

"Firewise" is a newish term coined by citizens living in the wildland-urban interface (WUI) all over the Americas, and the CCCFC is our local spearhead for that effort. A. J. and I were introduced to another type of fire safety practice, much of which is adaptable



to private property in the Idlewild and Lakeview Pines areas, by Joe Stehling, who lives in the Hidden Lake subdivision south of Angel Fire and who founded the local Firewise Coalition. Joe Stehling hosted a visit by the New Mexico Firewise Liaison Coordinator, Karen Lightfoot, to a series of local communities, so we invited the tour to pass through Idlewild for a brief look. A. J. Beretta, Ron Wells, and Frank Dodge joined our group, as did representatives from Taos Pines Ranch and the New Mexico Forestry Division.

As we looked at various examples in Idlewild, Ms. Lightfoot began with things that are "right" in the sense of adding to our fire risk as little as possible. She noted that many people in Idlewild seem to keep flammable materials in the safest possible relationship to dwellings. Flammable fuels that are typically stored outdoors are often placed far enough away from dwellings to keep the heat load of a localized fuel fire from igniting the dwelling.

During the one-hour tour of Idlewild, we listened to Ms. Lightfoot and others from the CCCFC as they shared their copious knowledge of being firewise in the WUI. The FH&S Committee will disseminate these and other suggestions as we develop a set of educational materials. The committee arranged to acquire a **large bulletin board**, which is mounted outside the Community Center for the present, but which may be relocated to the community entrance area after our new caretaker facility is established.

We are very fortunate to have two strong organizational forces so close to us. Each has its strengths and method of approach to WUI management, and we're eager to learn as much as possible to improve the chances of our community surviving a wildfire disaster. With the approval of the Board of Directors, we have joined both of these organizations as representatives of the IWCC and have begun some programs in our community in accordance with the following initial thoughts, contributed by A. J.:

I. Provide methods of fire prevention and methods to help protect residents and property against wildfire damage, including the following activities:

- A. Become a Firewise community.
- B. Provide a bulletin board with related educational materials and handouts.
- C. Work with the Cimarron Watershed Alliance to obtain funding for tree-thinning projects for residents who desire this service.

D. Work with our bordering neighbors and officials to promote a mutually beneficial relationship.

II. Provide an emergency plan of escape for the residents should a wildfire occur.

- A. Receive input from local fire departments, officials, and other Firewise communities.
- B. Work with our bordering neighbors to allow us to trespass if necessary to escape.
- C. Include gathering areas so it can be determined if everyone has escaped.
  - 1. Inform the proper officials of any missing persons.
  - 2. Inform the proper officials of those needing medical attention.

III. Promote improvement of the condition of State Highway 127 so that if a wildfire occurs, the inbound flow of emergency vehicles and outbound flow of residents is not hindered.

- A. Work with state highway officials and others to promote widening and surface improvements.
- B. Cooperate with neighbors on the nature of SH127's appropriate use.

The link to the national Firewise Communities site is <http://www.firewise.org/>. The link to the Cimarron Watershed Alliance is <http://cimarronwatershed.org>.

Our community, which was designed by developers about 80 years ago, has a relatively high density compared to WUI communities of today. Lots in Hidden Lake, for example, range in size from 10 to 20 acres each. Many of the firewise and forest-thinning techniques employed in Taos Pines Ranch or Hidden Lake are not feasible for us. On the other hand, the greater density of dwellings in our area spreads the overall task of forest management to more individual property owners, a potential strength if we can continue to work together.

For further information on firewise practices, check the postings on the bulletin board at the Idlewild Community Center. Of primary importance are: (1) not releasing embers from fires, (2) not allowing combustible materials to accumulate, (3) surveying the relationship of your cabin's combustible areas to the ground cover, (4) surveying the relationship of trees to your cabin, and (5) paying attention to the vulnerability of windows and screens to fire. Once a window is broken by heat, embers can flow into your cabin. There are more issues, too many to list here, which will be posted on the bulletin board.

### **Slash Pickup Program**

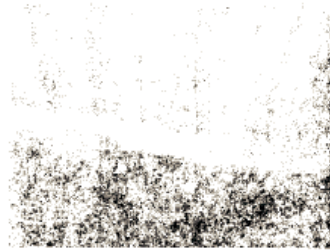
Last summer, the Village of Angel Fire instituted a Community Slash Pickup Program that included monthly pickups by their grapple truck on Highway 127 from May through September. We hope they will continue this program next summer. If you are interested in using this opportunity to clear your property of some debris without having to take it to Angel Fire, please check the bulletin board for schedules, and be sure to talk with our caretaker, Frank Dodge, for guidelines on what constitutes "slash," the largest size that can be picked up, where and when to put it out to avoid infringing on others' property, and how it should be placed to allow room for the grapple truck to pick it up. If the truck cannot pick it up, you will have to arrange for removal yourself.

### Some Good Examples of Firewise Practice

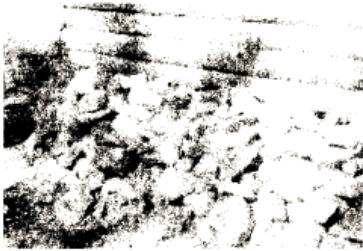
Before Helen and I returned home this fall, we took a few photos of some measures our neighbors are taking to reduce the risk of a dwelling fire, including installing spark arresters on their chimneys and improving the relationship of their dwelling materials to the forest floor.



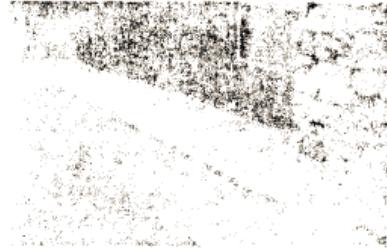
*Spark arresters prevent most embers from escaping into the forest*



*Metal flashing against the forest floor*



*A rock barrier protects against embers*



*A French drain is covered with a gravel path*

### 2008 Idlewild Map Committee, Frank Ray, Chair

Last summer, Margaret Ann Putnam, Helen Hyams, and I were able to spend several working days in the Colfax County Tax Assessor's Office. There we learned how to use the county's new search engine to check property information for the J. W. Dickerson subdivision and the areas surrounding it. Carol Mares in the tax assessor's office showed us ways to ferret out hard-to-find data, and everyone in Adeline Shell's tax assessor's office was generous and helpful, making our time spent in Raton both pleasant and fruitful. A longer report will be included in the spring *Idle Times*. For 2008, the 40 or so individuals we found who have not been in our lists of late will be treated separately and will be slowly incorporated into the IWCC database as we make sure we have the correct data for them. We are hopeful that some will be convinced of the value of our community and will welcome participation in it. Changes in property ownership are especially important to have for accuracy on the map.

For the 2008 map edition, which will be published in June, all of the new data will be useful in bringing the maps up-to-date. Other changes will include tweaking the road locations according to some new information gleaned from residents and a few key plats. A copy of the 2008 two-map set will be included in the "thank you" package sent to dues-payers in the spring. Additional maps will be available during the summer at \$10.00 per set. All changes should be sent in by **May 1, 2008**. Paul Fahrenthold continues to offer larger maps in C (18x24-inch) and D (24x36-inch) sizes, and to donate all proceeds to the Caretaker Cabin Fund. If you wish to pre-order a set of large maps, please contact Frank Ray at [frankray@swbell.net](mailto:frankray@swbell.net). The 18x24-inch map set is available for \$15.00; 24x36-inch map sets cost \$20.00. We thank Paul for his generous gift. Some large maps will be available in the summer.

The area road map for 2008 will again be distributed free of charge to emergency service providers in the Moreno Valley. We believe the map is helpful in reducing the response time from an emergency call. To make the maps accurate for this purpose, we are fairly dependent on area residents providing accurate information. Please help if you can.

### 2008 Idlewild Directory, Helen Hyams Ray, Directory Committee Member

As Max Helen Harrison, our Directory Chair, continues to recover from surgery, Frank Ray and I are carrying on with the process of refining contact information for residents. One Directory will be given free to dues-payers in the spring; additional copies will be available next summer at \$7.00 per copy. We are very anxious to have as complete information in the Directory as we can get, including, of course, name and address, but also home and cabin phone, if any, *current* e-mail address, and Idlewild phone and Eagle Nest P.O. Box number, if any. Please note that for this issue of *Idle Times*, we would like you to send your Directory changes to me, at the address on the Directory Changes form, or to my e-mail address: [hhyams@swbell.net](mailto:hhyams@swbell.net). We sincerely hope that Max Helen will be ready to resume command of the Directory by spring!



## **Contact Information**

**Chapel and Community House Use:** Sue Dorr, 8 Winding Way, Pecos, TX 79772, 432-447-4777 or 505-377-2804, [suebear11@hotmail.com](mailto:suebear11@hotmail.com)  
**Directory Changes:** Helen Hyams Ray, 8703 Granada Hills Dr., Austin, TX 78737, 512-301-8667 or 505-377-2287, [hhyams@swbell.net](mailto:hhyams@swbell.net)  
**Forest Health and Safety:** Frank Ray, 8703 Granada Hills Dr., Austin, TX 78737, 512-301-8667 or 505-377-2287, [frankray@swbell.net](mailto:frankray@swbell.net)  
**Map Information or Changes:** Frank Ray, 8703 Granada Hills Dr., Austin, TX 78737, 512-301-8667 or 505-377-2287, [frankray@swbell.net](mailto:frankray@swbell.net)  
**Memorial Donations:** Joan Kaye, 4339 Royal Ridge Dr., Dallas, TX 75229, 214-351-1869 or 505-377-3307, [rkaye98140@aol.com](mailto:rkaye98140@aol.com)  
**Memorial Plaques:** Louise Montague, 11536 E. De La O Rd., Scottsdale, AZ 85255, 480-585-6031 or 505-377-3847, [we2fly@flica.net](mailto:we2fly@flica.net)  
**Minister Suggestions:** Donna Porter, 812 West 59th Terr., Kansas City, MO 64113, 816-363-8106 or 505-377-3676, [djint@sbcglobal.net](mailto:djint@sbcglobal.net)  
**Property Sales:** Don Reavis, 3527 Kileen, Amarillo, TX 79109, 806-352-0636 or 505-377-3272, [nancyanddon1@suddenlink.net](mailto:nancyanddon1@suddenlink.net)  
**Newsletter Items:** Helen Hyams Ray, 8703 Granada Hills Dr., Austin, TX 78737, 512-301-8667 or 505-377-2287, [hhyams@swbell.net](mailto:hhyams@swbell.net)  
**Web Site:** Craig Sutton or Philip Sutton, [webmaster@idlewildcommunity.org](mailto:webmaster@idlewildcommunity.org)  
**Caretaker:** Frank Dodge, P. O. Box 365, Eagle Nest, NM 87718, 505-377-2228 or 505-377-3334, [f.dodge@att.net](mailto:f.dodge@att.net)

## **Our Wonderful Volunteers**

We thank the many people whose substantial contributions to various committees enrich our community. The more volunteers who participate, the less work there is for everyone and the more fun is had in these activities. New people are always gratefully welcomed. If you see a committee listed that you feel you would like to know more about and might be interested in joining, please contact the committee chair and dive in! If you are on a committee and weren't mentioned, contact your *Idle Times* editor, [hhyams@swbell.net](mailto:hhyams@swbell.net). (As this is the first time for this list, I know I didn't get everyone correctly.) In addition to those officially on committees, we thank the many others who willingly pitch in whenever they see a need.

**Beautification Committee,** Mary Lib Thornhill *Chair* ([thornhillartsources@yahoo.com](mailto:thornhillartsources@yahoo.com))

**Chapel and Community Center Use,** Sue Dorr, *Chair* ([suebear11@hotmail.com](mailto:suebear11@hotmail.com)); Joan Kaye, Ann Knupp, Donna Porter, Frank Dodge

**Directory Committee,** Max Helen Harrison, *Chair* ([dr-maxh@swbell.net](mailto:dr-maxh@swbell.net)); Helen Hyams Ray, Frank Ray

**Facilities Committee,** Jerry Middleton, *Chair* ([GTGriffin@suddenlink.net](mailto:GTGriffin@suddenlink.net)); Jerry Thomason

**Forest Health and Safety Committee,** Frank Ray, *Chair* ([frankray@swbell.net](mailto:frankray@swbell.net)); A. J. Beretta, Frank Dodge

**Fund-Raising Committee,** Lisa Henthorn, *Chair* ([apropos2lisa@aol.com](mailto:apropos2lisa@aol.com)); Debra Herman, Sandy Jefferson, Dave Johansen

**Map Committee,** Frank Ray, *Chair* ([frankray@swbell.net](mailto:frankray@swbell.net)); Paul Fahrenthold, Margaret Ann Putnam

**Memorial Donations,** Joan Kaye ([rkaye98140@aol.com](mailto:rkaye98140@aol.com))

**Memorial Plaques,** Louise and Fred Montague ([we2fly@flica.net](mailto:we2fly@flica.net))

**Newsletter,** Helen Hyams Ray ([hhyams@swbell.net](mailto:hhyams@swbell.net)); Frank Ray

**Off-Highway Vehicle User Group,** Jim Herman, *Chair* ([jh1008@gmail.com](mailto:jh1008@gmail.com)); Mark Jefferson

**Preacher Cabin Care Committee,** Sue Dorr, *Chair* ([suebear11@hotmail.com](mailto:suebear11@hotmail.com)); Joan Kaye, Co-Chair ([rkaye98140@aol.com](mailto:rkaye98140@aol.com));

Barbie Beretta, Barbara Hamilton, Ann Knupp, Louise Montague, Lynda Sudduth; Donna Porter, *Liaison*;

Frank Dodge, *Advisor*

**Potluck Committee,** Joan Kaye, *Chair* ([rkaye98140@aol.com](mailto:rkaye98140@aol.com)); Sue Dorr, Co-Chair ([suebear11@hotmail.com](mailto:suebear11@hotmail.com)); Kala Marsh,

Barbara McLemore, Vicki Mixon, Elaine Randall, Shari Stanford, Frank Dodge

**Property Committee,** Don Reavis, *Chair* ([nancyanddon1@suddenlink.net](mailto:nancyanddon1@suddenlink.net)); A. J. Beretta, Mark Jefferson

**Road Committee,** Jim Herman, *Chair* ([jh1008@gmail.com](mailto:jh1008@gmail.com)); Frank Dodge

**Ways and Means Committee,** Jerry Middleton, *Chair* ([GTGriffin@suddenlink.net](mailto:GTGriffin@suddenlink.net)); Chris Herring, Joan Kaye, Don Reavis,

Don Woolsey, Richard Barbour, Frank Dodge

**Idlewild Web Site, Webmasters:** Craig Sutton ([casutton@aol.com](mailto:casutton@aol.com)), Philip Sutton ([psutton@suttonco.com](mailto:psutton@suttonco.com))

**Worship Committee,** Donna Porter, *Chair* ([djint@sbcglobal.net](mailto:djint@sbcglobal.net)); Jerry Porter

**Archive Project,** Helen Hyams ([hhyams@swbell.net](mailto:hhyams@swbell.net)); Frank Ray ([frankray@swbell.net](mailto:frankray@swbell.net))

**History Project,** Ann Knupp ([arco\\_iris@msn.com](mailto:arco_iris@msn.com))

**Caretaker,** Frank Dodge ([f.dodge@att.net](mailto:f.dodge@att.net)). Ask Frank about anything concerning the community you need help with or information about.

A donation in the amount of \_\_\_\_\_ has been made to

Idlewild Community Center

c/o Earl O'Steen, Treasurer

P.O. Box 5629

Borger, TX 79008

\_\_\_\_\_ in memory of \_\_\_\_\_

This gift is given by: \_\_\_\_\_

\_\_\_\_\_  
Name of donor

\_\_\_\_\_  
Address

\_\_\_\_\_  
City

\_\_\_\_\_  
State

\_\_\_\_\_  
Zip

---

### Memorial Plaque Order

Each plaque costs \$47.00. Each plaque has two lines with a maximum of 20 spaces per line. Mail the completed order with a check and direct all questions to:

(May 15th to Nov. 1st)

Louise Montague

General Delivery

Eagle Nest, NM 87718

505-377-3847

(Nov. 1st to May 15th)

Louise Montague

11536 E. De La O Rd.

Scottsdale, AZ 85255

480-585-6031

Send this portion with a check to order the plaque:

Name on the plaque (20 spaces total including letters, punctuation, & spaces between the letters)

Line One \_\_\_\_\_

Second line (20 spaces total, year of birth and death, place of residence, etc.)

Line Two \_\_\_\_\_

Person ordering \_\_\_\_\_

Address \_\_\_\_\_

Telephone \_\_\_\_\_

Remarks \_\_\_\_\_

---

### Directory Changes

Please give the information as you wish it to appear in the Directory. Remember that correct block and lot ownership information is also important for the master Idlewild database and the Idlewild maps.

\_\_\_\_\_  
Owner name (Last)

\_\_\_\_\_  
(First name or names)

\_\_\_\_\_  
Home Address

\_\_\_\_\_  
City

\_\_\_\_\_  
State

\_\_\_\_\_  
Zip Code

\_\_\_\_\_  
Cabin Address (for example, #30, Rd 6)

\_\_\_\_\_  
Eagle Nest P.O. Box number

\_\_\_\_\_  
Property owned (for example, Block 20, Lots 6-12)

\_\_\_\_\_  
Phone numbers (Home)

\_\_\_\_\_  
(Cabin)

\_\_\_\_\_  
E-mail address

Mail completed form to Helen Hyams Ray, 8703 Granada Hills Dr., Austin, TX 7873 or e-mail at [hhyams@swbell.net](mailto:hhyams@swbell.net)